

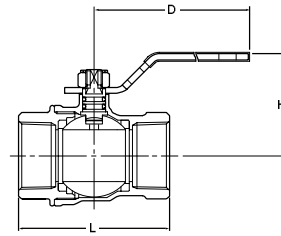
TYPE 600

BRASS BALL VALVE, FULL PORT

Bolted body and cap, Blowout-proof Stem, Double O-ring stem seals, Threaded ends to ASME B1.20.1

W.O.G. non-shock 4.14 MPa (600 psi)*, W.O.G. 150°C 1.03 MPa (150 psi)

*Size 4 : W.O.G. non-shock 2.76Mpa (400psi), W.O.G. 150°C 0.69Mpa (100psi)



Materials

Parts	Material
Body	Brass/Bronze*
Body cap	Brass/Bronze*
Stem	Brass (nickel plated)*
Ball	Brass (chrome free plated(Size 1/4 to 3)) Brass (chrome plated(Size 4))
Ball seat	PTFE
O-ring	FKM

*Size 4 only

Fig. AKSZA

• Threaded end to ASME B1. 20. 1

Approvals

NSF/ANSI61-8 CSA (US/C) UL FM
*Size 1/4 to 3

Dimensions

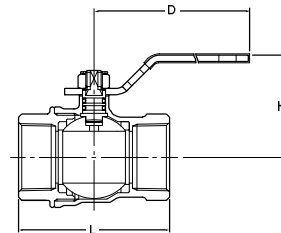
Nominal Size	mm											
	inch	1/4	3/8	1/2	3/4	1	1 1/4	1 1/2	2	2 1/2	3	4
L Threaded end to end	42	42	53	60	72	84	92	110	138	167	193	
H Height	37	37	40	43	50	55	65	72	100	112	131	
D Length of Handle	70	70	80	80	110	110	150	150	200	300	300	

TYPE 600

BRASS BALL VALVE, FULL PORT

Bolted body and cap, Blowout-proof Stem, Double O-ring stem seals, Threaded ends to BS21

W.O.G. non-shock 4.14 MPa (600 psi), W.O.G. 150°C 1.03 MPa (150 psi)



Materials

Parts	Material
Body	Brass
Body cap	Brass
Stem	Brass (nickel plated)
Ball	Brass (chrome plated)
Ball seat	PTFE
O-ring	FKM

Fig. SZA

• Threaded end to BS21

Dimensions

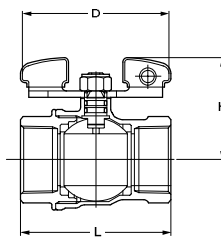
Nominal Size	mm								
	inch	1/4	3/8	1/2	3/4	1	1 1/4	1 1/2	2
L Threaded end to end	42	42	52	60	72	84	92	110	
H Height	36	36	40	43	50	54	64	72	
D Length of Handle	70	70	80	80	110	110	150	150	

TYPE 600

BRASS BALL VALVE, FULL PORT

Bolted body and cap, Blowout-proof Stem, Double O-ring stem seals, Threaded ends to ASME B1.20.1

W.O.G. non-shock 4.14 MPa (600 psi), W.O.G. 150°C 1.03 MPa (150 psi)



Materials

Parts	Material
Body	Brass
Body cap	Brass
Stem	Brass
Ball	Brass (chrome free plated)
Ball seat	PTFE
O-ring	FKM

Fig. AKSZA

• Threaded end to ASME B1. 20. 1

Approvals

NSF/ANSI61-8 CSA (US/C) UL FM
*Size 1/4 to 2

Dimensions

Nominal Size	mm								
	inch	1/4	3/8	1/2	3/4	1	1 1/4	1 1/2	2
L Threaded end to end	42	42	53	60	72	84	92	110	
H Height	34	34	39	43	52	58	73	81	
D Length of Handle	55	55	70	70	100	100	130	130	