

CLASS 150 Y-PATTERN STRAINER

Y-Pattern body, Screwed cap, 304 stainless steel screen
Threaded ends to BS21 (JIS B0203) or NPT, or solder joint ends.

W.O.G. non-shock 2.07 MPa (300 psi), Saturated steam pressure 1.03 MPa (150 psi) up to size 2*

*Contact KITZ for larger sizes



Fig. Y

- Threaded end to BS21 (JIS B0203)

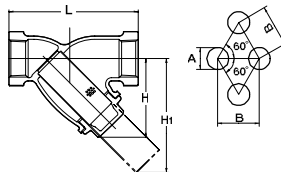
Fig. AKY

- Threaded end to ASME B1.20.1



Fig. CY

- Solder joint ends to JIS B2011 / ASME B16.18 (2 1/2 & 3)



Materials

Parts	Material
Body	Bronze
Body cap	Brass
Screen	Type 304 stainless steel

	A	B
³ / ₈ to 2	1.4	2.4
2 ¹ / ₂ to 3	1.5	2.5

Caution Solder joint end valves should not be used in service where the temperature of line fluid is higher than the softening point of solder.

Dimensions

Nominal Size	inch	³ / ₈	¹ / ₂	³ / ₄	1	1 ¹ / ₄	1 ¹ / ₂	2	2 ¹ / ₂	3	mm
L Threaded end to end		70	80	100	115	135	160	195	230	240	
L1 Solder			80	105	125	145	170	210	250	280	
H Height		44	49	57	70	82	98	121	148	180	
H1		61	68	83	105	124	149	188	216	267	

CLASS 175 BRASS BUTTERFLY VALVE

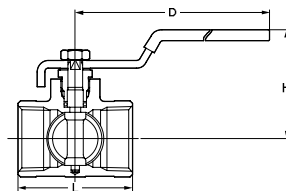
NBR lined disc, Balancing stop hand lever
Threaded ends

W.O.G. non-shock 1.21 MPa (175 psi)



Fig. FV

- Threaded end to BS21 (JIS B0203)



Materials

Parts	Material
Body	Brass
Stem	Type 304 stainless steel
Disc	Type 304 stainless steel + white-NBR
O-ring	NBR

Dimensions

Nominal Size	inch	¹ / ₂	³ / ₄	1	1 ¹ / ₄	1 ¹ / ₂	2	mm
L Threaded end to end		47	51	58	67	73	82	
H Height		45	47	50	60	64	70	
D Handwheel diam		85	85	85	110	110	110	